

# FLAMING RIVER<sup>®</sup>



**BATTERY CONTROL SAFETY SYSTEMS**

# 350 AMP Battery Disconnect Safety Switches



**Note: Terminals on battery disconnect switches are live parts of the electrical system and should be treated just like battery terminals. Covers are recommended, but not included, for each kit. Contact your vehicle's manufacturer to determine proper placement and suitability.**

## FR1043 HD Amp Battery Disconnect Switch w/Terminal Covers



This heavy-duty battery disconnect switch, with larger diameter terminal studs, is ideal for Class 8 Trucks, RVs, Chippers and other construction vehicles. Clip on terminal covers are designed to protect against arcing. Proprietary brass attaching nut allows 180 degree rotation. Higher Amp capacity – 2500 amps/350 continuous.

- Waterproof • Silver plated copper internal contact plates
- Increased insulation to H Class rating
- Larger diameter studs – .4725 inch (M12)
- **Longer studs – 1.25" to allow easier double cable connection**
- Stainless Steel Fasteners for corrosion resistance
- LED option: Illuminated LED indicates whether system is on or off
- Lock-out option: Enables use of padlock for security

## FR1045 - Lever Style Battery Disconnect Switch with Lock-Out



Vehicle Applications	All
Voltage	12 - 24V
Maximum Continuous Current on Main Connections	350A
Maximum Surge Current on Main Connections	800A 30 sec (tbd) salt spray test: 300h
Environmental Protection Rating	.630 in (space available for terminal cables)
Stud Length	
Stud Size	M12
Tightening Torque	14 ft lbs
Operating Temperature Range	-30°+80°C
Contacts	
Contact Terminals	Silver plated copper
Contact Hardware	Silver plated copper Nickel plated brass
Waterproof	IP 65, can be improved to IP67 with small changes

Increased insulation bushings to H class rating

Proprietary brass nut allows for 180 degree rotation

Clip on terminal covers are designed to protect against arcing and short circuit. Terminal Covers are splash and dust proof



Thicker silver plated copper internal contact plates

Larger diameter studs - .4725 (M12)  
Longer Studs - 1.25" to allow easier double cable connection



Stainless Steel fasteners for corrosion resistance

# 250 AMP Battery Disconnect Safety Switches



**Note: Terminals on battery disconnect switches are live parts of the electrical system and should be treated just like battery terminals. Covers are recommended, but not included, for each kit.**

**Contact your vehicle's manufacturer to determine proper placement and suitability.**



## FR1005RE - The Big Switch

Vehicle Applications	All
Voltage	12 - 24V
Maximum Continuous Current on Main Connections	250A
Maximum Surge Current on Main Connections	800A 30 sec (tbd)
Environmental Protection Rating	salt spray test: 300h
Stud Length	.276 in (space available for terminal cables)
Stud Size	M10
Tightening Torque	14 ft lbs
Operating Temperature Range	-30°+80°C
Contacts	Silver plated copper
Contact Terminals	Silver plated copper
Contact Hardware	Nickel plated brass
Waterproof	IP65



## FR1005BK - The Big Switch

Vehicle Applications	All
Voltage	12 - 24V
Maximum Continuous Current on Main Connections	250A
Maximum Surge Current on Main Connections	800A 30 sec (tbd)
Environmental Protection Rating	salt spray test: 500h
Stud Length	.276 in (space available for terminal cables)
Stud Size	M10
Tightening Torque	14 ft lbs
Operating Temperature Range	-30°+80°C
Contacts	Silver plated copper
Contact Terminals	Silver plated copper
Contact Hardware	Nickel plated brass
Waterproof	IP65



## FR1044 - The Big Switch with Lock-Out & Increased Terminal Space

This New Big Switch is a heavy-duty Battery Disconnect Switch with **INCREASED TERMINAL SPACE** and is rated at 250 Amps continuous service and 2500 Amps for 5 second intervals (12V/24V). The Big Switch is manufactured with silver plated copper electrical contacts, nickel plated brass hardware with a completely sealed, waterproof design, and is able to withstand the most severe operating conditions. We back the quality of this switch with a three (3) year warranty. This Big Switch comes with a lock-out bracket which enables a padlock to be inserted in the "OFF" position to comply with OSHA lock-out/tag-out regulation 1910.147. This prevents theft and accidental activation during equipment maintenance.



**Maximum Corrosion Protection**

## Terminal Covers for Grooved Terminal Stud - FR1014TM

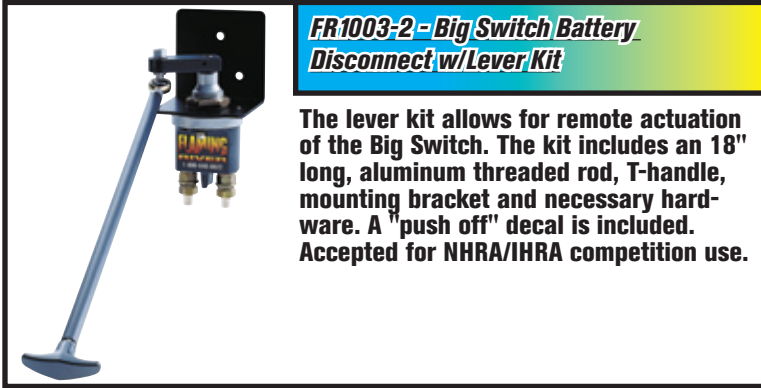
Sold in sets of two, can be used to cover cables on all Battery Disconnect Switches. Sold separately from switch.



# 250 AMP Battery Disconnect Safety Switches

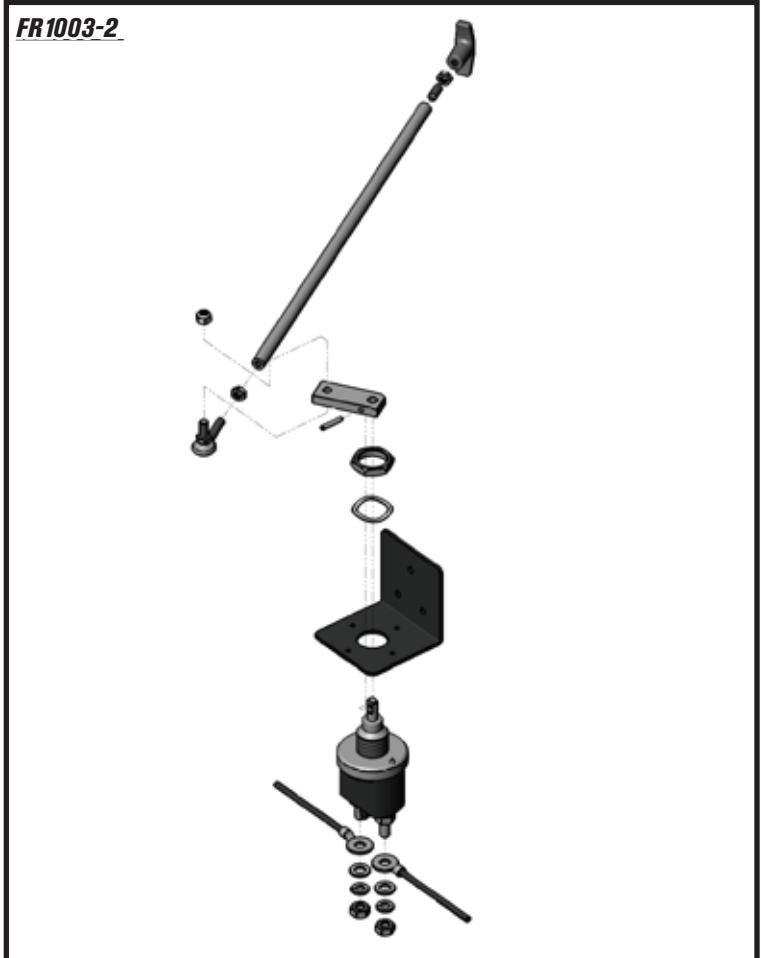


**Note: Terminals on battery disconnect switches are live parts of the electrical system and should be treated just like battery terminals. Covers are recommended, but not included, for each kit.  
Contact your vehicle's manufacturer to determine proper placement and suitability.**



**FR1003-2 - Big Switch Battery Disconnect w/Lever Kit**

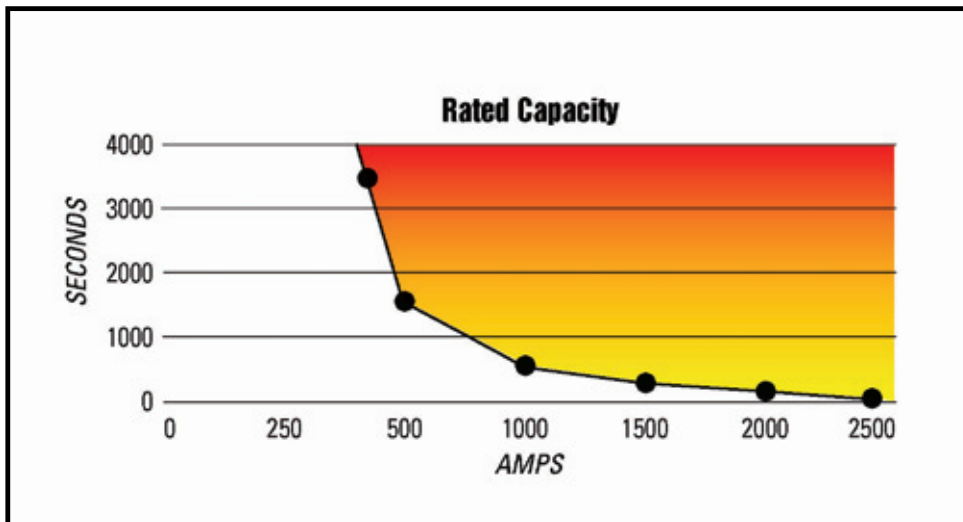
The lever kit allows for remote actuation of the Big Switch. The kit includes an 18" long, aluminum threaded rod, T-handle, mounting bracket and necessary hardware. A "push off" decal is included. Accepted for NHRA/IHRA competition use.



**FR1003-2**

**Terminal Covers - FR1003TM**

Sold in sets of two, can be used to cover cables on all Battery Disconnect Switches. Sold separately from switch.



# 250 AMP Battery Disconnect Safety Switches



**Note:** Terminals on battery disconnect switches are live parts of the electrical system and should be treated just like battery terminals. Covers are recommended, but not included, for each kit.  
Contact your vehicle's manufacturer to determine proper placement and suitability.



## FR1005LED - Big Switch Battery Disconnect w/LED Indicator

The Big Switch is now available with an illuminated LED that indicates when the system is on. The visual cue easily identifies whether the switch and electrical system are ON or OFF for proper shut down procedure.

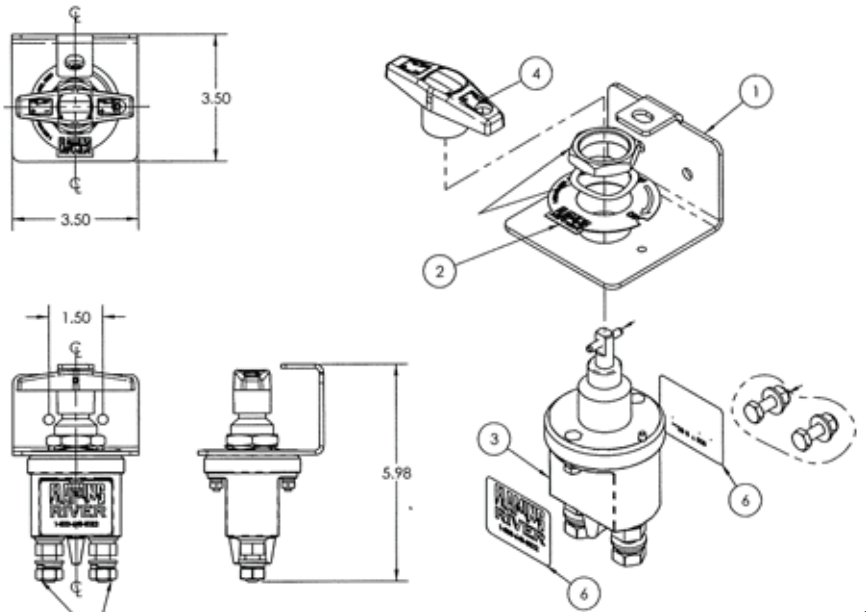
- LED Indicator Light - Clear indicator that system is ON or OFF
- Rated Capacity 2500 Amps / 250 continuous
- Stainless Steel Fasteners for corrosion resistance
- Waterproof • Silver plated copper internal contact plates
- M10 studs
- Lock-out feature enables use of padlock for OSHA Lock-out/Tag-Out compliance



## FR1005 - The Big Switch with Lock-Out

The Big Switch is a heavy-duty Battery Disconnect Switch rated at 250 Amps continuous service and 2500 Amps for 5 second intervals (12V/24V). The Big Switch is manufactured with silver plated electrical contacts and with a completely sealed, waterproof design, and is able to withstand the most severe operating conditions. We back the quality of this switch with a three (3) year warranty. This Big Switch comes with a lock-out bracket which enables a padlock to be inserted in the "OFF" position to comply with OSHA lock-out/tag-out regulation 1910.147. This prevents theft and accidental activation during equipment maintenance.

Compare The Difference		
Feature	Flaming River Heavy Duty Switch	Brand X
Rating (12V/16V/24V)	250 Amps Continuous	20 Amps
Rating Surge (12V/16V/24V)	2500 Amps	125 Amps
Waterproof	Yes	No
Silver Plated Terminal	Yes	No
Design	Spring Loaded	Rotary
Weight	17 oz.	14 oz.
Warranty	3 Years	None



# 250 AMP Battery Disconnect Safety Switches



**Note: Terminals on battery disconnect switches are live parts of the electrical system and should be treated just like battery terminals. Covers are recommended, but not included, for each kit. Contact your vehicle's manufacturer to determine proper placement and suitability.**



## FR1009 - Big Switch Battery Disconnect w/Removable Key

The Big Switch with removable laser cut, stainless steel key enhances the security and safety features available with the Big Switch. This unit is rated at 250 amps continuous service and 2500 amps for 5 second intervals (12V / 24V) It is a heavy duty, waterproof switch. The removable key feature is ideal for construction, farm equipment and passenger cars. An absolutely essential theft deterrent.



## The Big Switch with Extension Kit FR1003-4 • Extension Only - FR1003-EXT

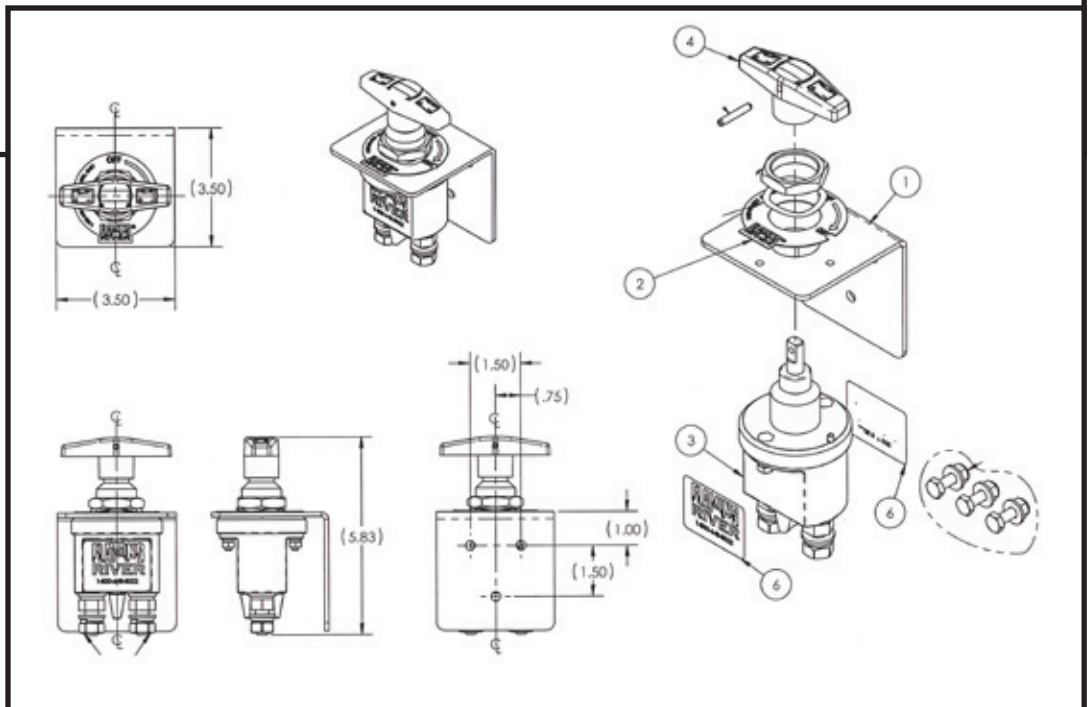
This industrial lever kit allows for remote mounting of the Big Switch. Kit includes a custom 15" aluminum rod, handle, and the switch.

- Rated at 250 amps continuous service (12/16/24V) and 2500 amps for 5 second surges.
- Spring-loaded, vibration resistant waterproof design.
- Accepted by most sanctioning bodies including IHRA/NHRA.
- Furnished with an easy-grip T-handle, anodized aluminum bracket and zinc plated mounting hardware.

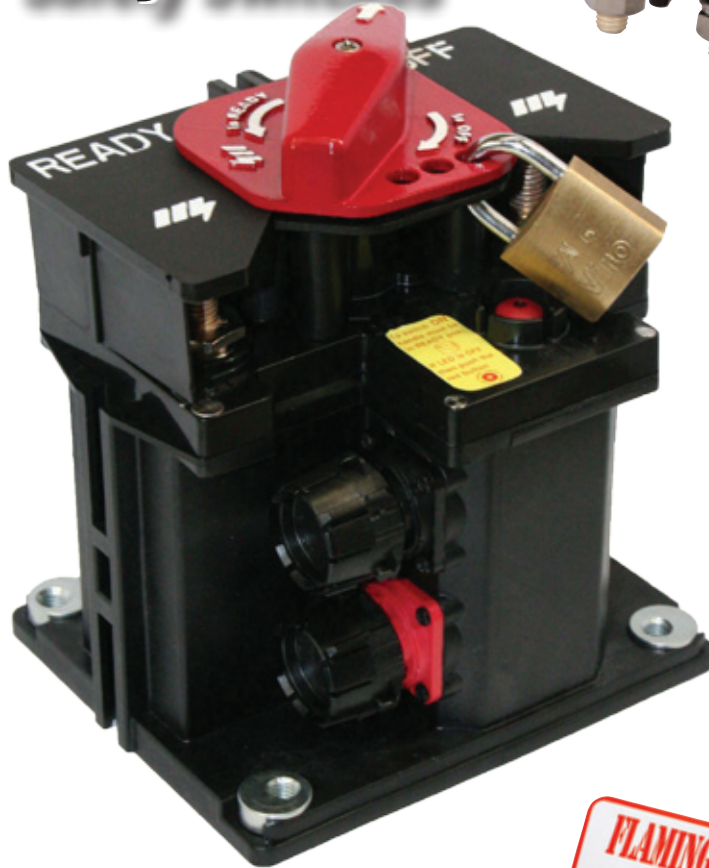


## FR1003 - Big Switch Battery Disconnect

Using a low amp switch creates resistance and actually reduces power. Flaming River's heavy duty battery disconnect switch is top of the line designed for complex electrical systems and 16 Volt batteries. Rated at 250 amps continuous service (12/16/24V) and 2500 amps for 5 second surges. Spring-loaded, vibration resistant, waterproof design. Accepted by most sanctioning bodies including IHRA/NHRA. Furnished with an easy-grip T-handle, anodized aluminum bracket and zinc plated mounting hardware.



# 300 AMP Battery Disconnect Safety Switches



**Note: Terminals on battery disconnect switches are live parts of the electrical system and should be treated just like battery terminals. Covers are recommended, but not included, for each kit.  
Contact your vehicle's manufacturer to determine proper placement and suitability.**

## B-Safe Dual Switch Power Management - FR1058

Voltage	12V or 24V Automatically Detected
Size	5.5 x 5 x 7(H) inches
Stud Size & Length	M10 x .827 inches
Stud Torque	15 ft lbs
Max Continuous Current	2 x 300 amps
Protection Rating (Body)	IP67 and IP69K9K (water pressure cleaning)
Protection Rating (Contacts)	IP54
Salt Spray Test	300H
Weight	5lbs
EX Compliance	EN/IEC 60079-0: 2009 EN/IEC 60079-11: 2007
Temp Range	-40 - +158 degrees

# 500 AMP Battery Disconnect Safety Switches



**Note: Terminals on battery disconnect switches are live parts of the electrical system and should be treated just like battery terminals. Covers are recommended, but not included, for each kit.  
Contact your vehicle's manufacturer to determine proper placement and suitability.**



## FR1046 - The Matrix Battery Disconnect with Dual Pole, Lock-Out & Silver Plated Pads

Vehicle Applications	All
Voltage	12 - 24V
Maximum Continuous Current on Main Connections	500A
Maximum Surge Current on Main Connections	1000A 30 sec
Environmental Protection Rating	salt spray test: 300h
Stud Length	.728 in (space available for terminal cables)
Stud Size	M12
Tightening Torque	14ft lbs +/-1ft lbs
Operating Temperature Range	-30°+80°C
Contacts	Silver plated copper - with silver pads
Contact Terminals	Silver plated copper - with silver pads
Contact Hardware	Nickel plated brass
Waterproof	IP67 and IP69K (water pressure cleaning)

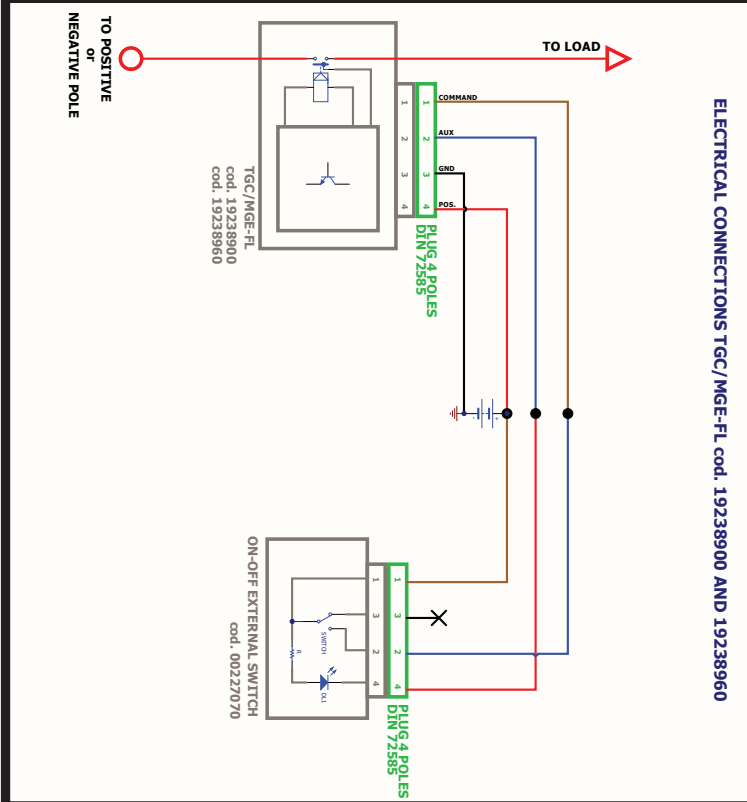
# Automatic Battery Disconnect Safety Switches



**Note: Terminals on battery disconnect switches are live parts of the electrical system and should be treated just like battery terminals. Covers are recommended, but not included, for each kit.**

**Contact your vehicle's manufacturer to determine proper placement and suitability.**

## Electro Wizard "Watch Dog"®



	FR1056	FR1057
Vehicle Applications	All	All
Voltage	12 and 24V	12 and 24V
Maximum Continuous Current on Main Connections	500A	300A
Maximum Surge Current on Main Connections	1000A 30 sec	800A 30 sec
Environmental Protection Rating	salt spray test: 300h	salt spray test: 300h
Stud Length	.670 in (stud length)	.670 in (stud length)
Stud Size	M12	M12
Tightening Torque	14ft lbs +/-1ft lbs	14ft lbs +/-1ft lbs
Operating Temperature Range	-30°+80°C	-30°+80°C
Contacts	Silver plated copper - with silver pads	Silver plated copper - with silver pads
Contact Terminals	Silver plated copper - with silver pads	Silver plated copper - with silver pads
Contact Hardware	Nickel plated brass	Nickel plated brass
Waterproof	IP67 and IP69K (water pressure cleaning)	IP67 and IP69K (water pressure cleaning)





# Automatic Battery Disconnect Safety Switches



**Note:** Terminals on battery disconnect switches are live parts of the electrical system and should be treated just like battery terminals. Covers are recommended, but not included, for each kit.  
Contact your vehicle's manufacturer to determine proper placement and suitability.



**“Electro-Wizard” Automatic Battery Disconnect Switch**

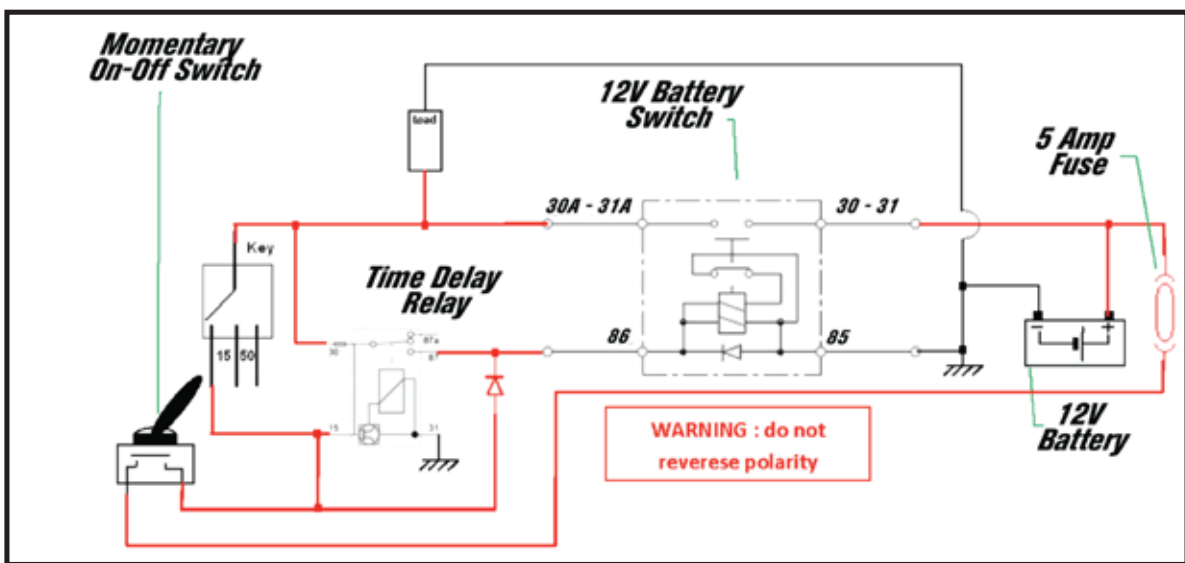
- 12 Volt Electronic Battery Disconnect Switch. 24V system available upon request.
- Passive Magnetic Solenoid Operation – No mechanical switch to forget to operate
- 250 Amps Continuous / 2500 Amp Surge
- IP 65 Rating
- Sealed Waterproof Design Can withstand severe operating condition

**Ideal Protection For:**

- Construction & Farm Equipment / Mining & Off-Highway Vehicles
- Heavy-Duty Trucks
- Automotive / Racing
- Marine
- DEF System Compatible

Part No.	Description
FR1051	12V Electro Wizard - Grounded Solenoid - Uses a 12V Pos input to engage.
FR1052	12V Electro Wizard - Insulated Solenoid with switch cover - Engagement with Pos or Neg input
FR1053	3 Minute Delay off timer relay 12V
FR1055	6 Minute Delay off timer relay 12V
FR1054	24V Electro Wizard - Insulated Solenoid with switch cover. Engagement with Pos or Neg input

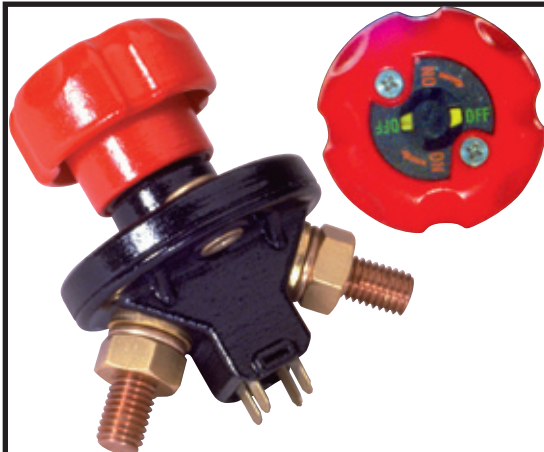
CHARACTERISTICS	Ratings
Voltage	12V
Max. Continuous current on main contacts	250 A @ (74°F / 23°C)
Max. Surge current on main contacts	2500 A for 3 sec.
Environmental Protection Rating	IP 65
Tightening torque M 10 nuts	14.75ft lb. / 20 NM
Tightening torque M 5 nuts	1.18ft lb. / 1.6 NM
Operating temperature range	-40°F - 185°F / -40°C - 40°C
Contacts	Silver plated copper
Contact Terminals	M10 tin-plated brass
Contact Hardware	Brass
Peak current coil rated input	4.4 A
Max. Retaining coil	3.2A
Holding coil rated input	0.4 A



# 100 - 150 - 300 AMP Battery Disconnect Safety Switches



**Note: Terminals on battery disconnect switches are live parts of the electrical system and should be treated just like battery terminals. Covers are recommended, but not included, for each kit.**  
**Contact your vehicle's manufacturer to determine proper placement and suitability.**



## Combination Battery and Alternator Kill Switch - FR1013

This combo kill switch designed to completely shut down the battery and charging system in an emergency situation. Ideal for racing, vehicle storage, marine and RV applications Prevents battery drain, theft, and reduces the risk of electrical fire

- Push Off for emergency shut-down and color-coded to indicate operating position- ON or OFF, with a durable spring-loaded design
- Meets IHRA, NHRA and SCCA sanctioning body requirements
- Rated Capacity:
- Battery - 2000 Amp Surge
- 150 Amp Continuous
- Alternator - 120 Amp



## The Little Switch - FR1002

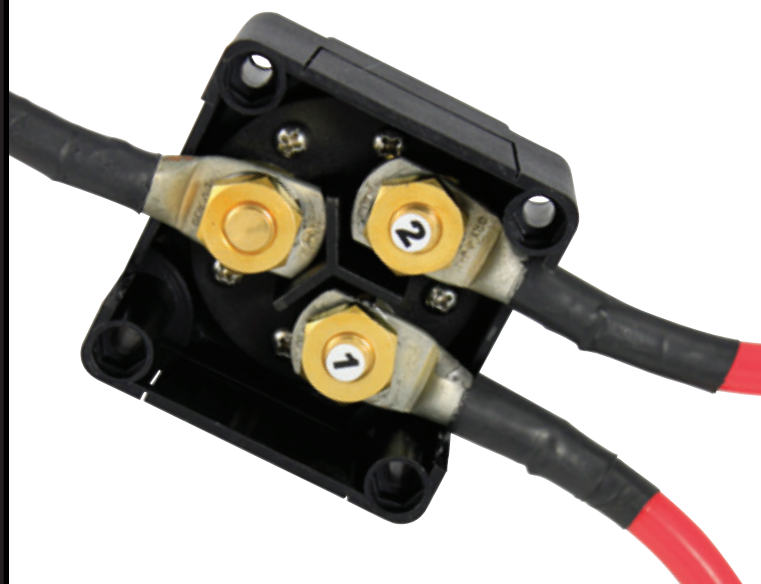
The Little Switch is rated at 100 amps continuous service and 500 amps for 10 second surges making it ideal for street rods, classics and passenger cars. In addition to preventing battery drain, this unique switch is also a cost effective anti-theft device. A rubber boot seals the neck from moisture and dirt.

- Competition approved by IMSA, ARCA, and SCCA.
- Inexpensive Anti-theft Device
- Prevents Battery Drain
- Water Resistant
- Removable Key

## FR1050 - Dual Battery Disconnect Switch

The Dual Battery Disconnect Switch allows for two batteries to operate independent of one another, or for both to be in the ON or OFF position at the same time.

- Rated at 300 Amps continuous service, and 1000 Amps for 5 second surges.
- 12 or 24 Volts
- IP 54 Rating
- 300 Amps Continuous
- 1000 Amps Surge for 5 Seconds
- Silver Plated Contacts



# FLAMING RIVER®

### REQUEST FOR QUOTATION

Please let us know your required part number, amp rating and quantity. We will prepare a quotation specific to your needs:

<b>Part No.</b>	
<b>Amperage Rating</b>	
<b>Quantity</b>	

<b>Company</b>	
<b>Contact Name</b>	
<b>Phone No.</b>	
<b>E-Mail</b>	
<b>Web Site</b>	

#### PAYMENT:

We accept Visa, Mastercard and Discover. C.O.D. (US Funds). Certified check or money order is also available at an additional cost.

#### DELIVERY:

Orders ship within 3 to 5 business days using UPS ground freight or other comparable service.

#### AIR SHIPMENT:

Next Day Air, Second Day Air and Three Day Select services are available upon request. These will ship the next business day and are subject to special handling charges. Credit card only for air shipments. Bill to and shipping address must match for address verification.

#### RETURNS:

Product returns and exchanges must be called in for authorization prior to return and shipped freight prepaid with a copy of the invoice. (Any shipment received without paperwork will be refused.) Returns are subject to a 15% handling fee (minimum \$15.00). Freight and polishing charges are non-refundable. Returns/Exchanges must be made within 30 days of purchase date from Flaming River. Product that has been cut, scratched, painted or installed cannot be returned. Returns must be made to the distributor where purchased.

#### ORDERING

##### Phone:

Orders can be placed by calling our toll-free number:

1-800-648-8022

Hours: 8:30am - 5:00pm EST

##### Fax:

Orders can be placed using our toll-free,

24-hour fax order line: 1-800-243-5263

(1-800-24-FLAME)

Web: [www.flamingriver.com](http://www.flamingriver.com)

#### WARRANTY DISCLAIMER:

##### Flaming River's Limited Warranty

Flaming River warrants its products to be free from defects in material and workmanship for a period of one (1) year after the date of purchase, except that: All steering columns are warranted for a period of three (3) years from the date of purchase. The Big Switch (part number FR1005) is warranted for a period of three (3) years from the date of purchase, provided that it is not mounted with a steel bracket and provided further that it is adequately protected from environmental conditions. All electrical products other than the Big Switch are warranted for a period of ninety (90) days from the date of purchase. Flaming River's warranty liability is limited to the replacement of defective products. Flaming River is not liable for any labor costs associated with any warranty claim, or for any incidental or consequential damages. Improper installation, abuse, racing, and/or modification of the products voids this warranty. No warranty of merchantability or fitness for a particular purpose is made by Flaming River with respect to any of its products.

##### Warnings and Recommendations

It is the customer's responsibility to determine the suitability of a given Flaming River product for the customer's uses. Likewise, it is the customer's responsibility to install a Flaming River product. Contact the vehicle manufacturer whenever installing a switch to confirm the appropriateness of using such a switch and the recommended placement of the switch on the vehicle. Use qualified chassis specialists for the installation of all steering related components. Be aware that the installation of certain Flaming River products may adversely impact a manufacturer's warranty with respect to certain vehicles and other manufactured goods. Flaming River will repair or replace any product found to be defective in material or workmanship. Improper installation, abuse, racing and/or modification VOID WARRANTY. Flaming River is not responsible for any labor costs associated with any warranty. Note: The information contained in this catalog is correct to the best of our knowledge and belief, having been compiled from reliable and official sources of information. However, Flaming River Industries, Inc. cannot assume responsibility for possible error.

# FLAMING<sup>®</sup> RIVER



**Flaming River Industries, Inc.**  
**800 Poertner Dr. Berea, Ohio 44017**  
**440-826-4488 • Fax 440-826-0780 • Toll Free 1-800-648-8022**  
**[www.flamingriver.com](http://www.flamingriver.com)**